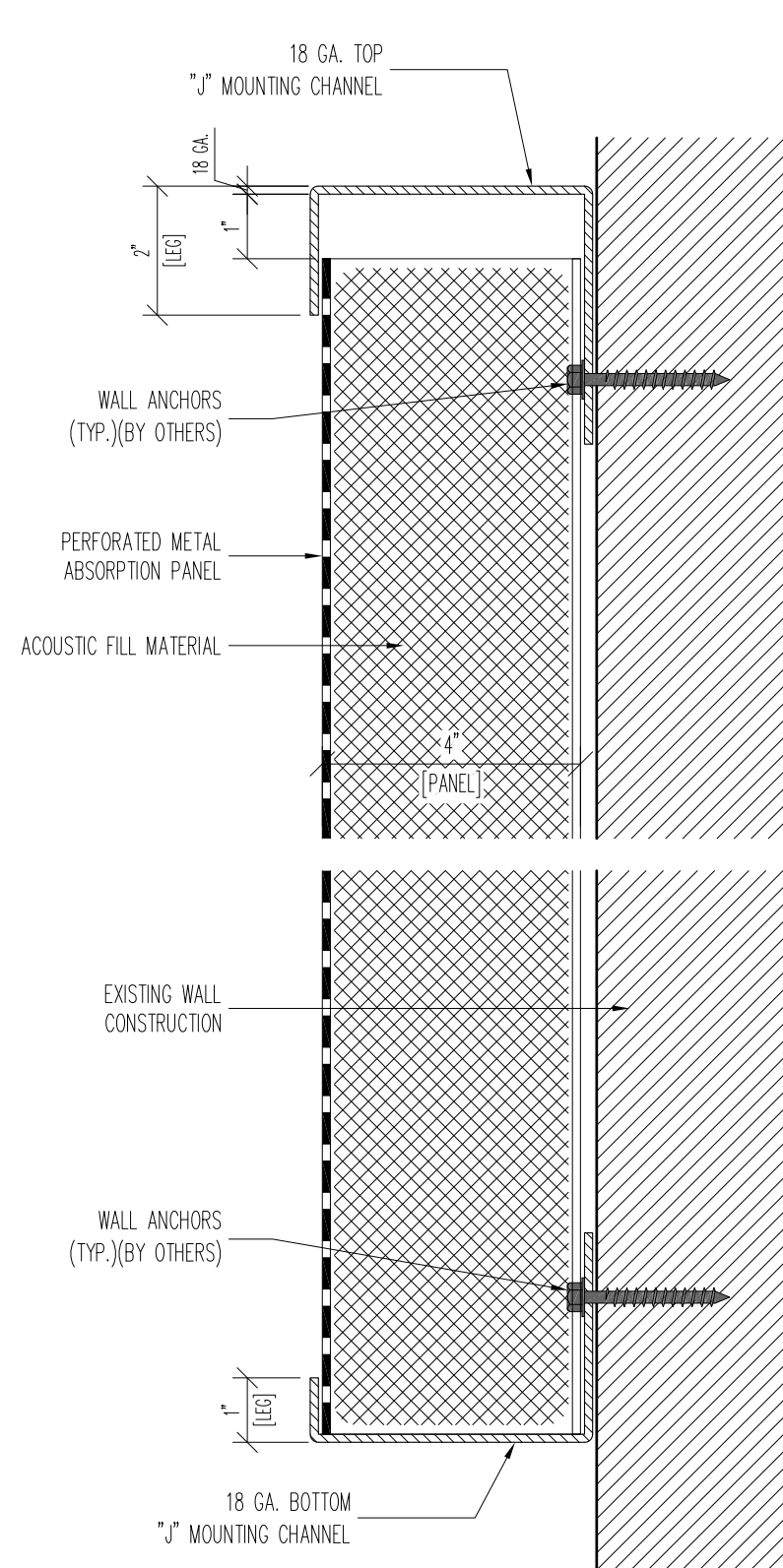
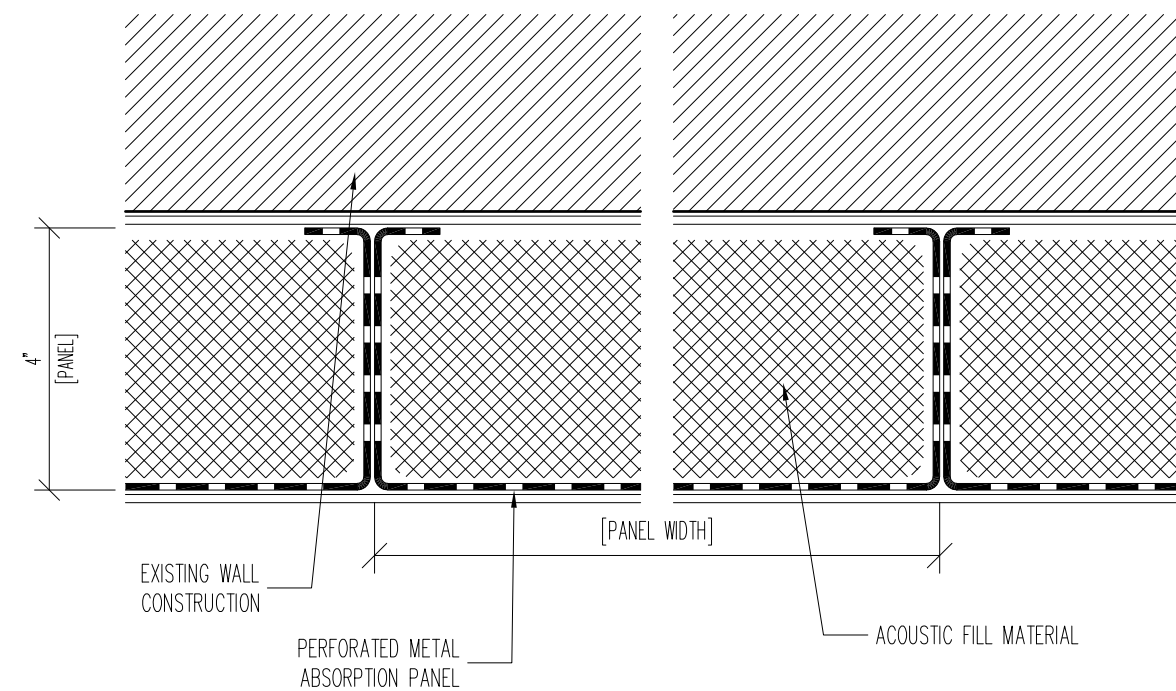


PARTIAL ENLARGED ELEVATION VIEW



SECTION A-A



SECTION B-B

GENERAL NOTES:

1. ABSORPTION PANELS ARE FORMED FROM 22 GA. PERFORATED STEEL WITH  $\frac{3}{32}$ " HOLES ON  $\frac{3}{16}$ " STAGGERED CENTERS.
2. PANEL FILL: IS NON-COMBUSTIBLE, SOUND ABSORBING FIBERGLASS.
3. PANELS ARE SUPPLIED WITH CONTINUOUS 18 GA. TOP AND BOTTOM 'J'-CHANNEL FOR MOUNTING PANELS TO EXISTING WALL/CEILING. ANCHORING HARDWARE VARIES BASED ON EXISTING WALL CONSTRUCTION.
4. FINISH: PANELS ARE AVAILABLE WITH A TGIC POLYESTER POWDER COATING OR UNFINISHED G-90 SPANGLED GALVANIZED COATING. STD. PAINT COLOR IS RAL-9003 (STD. WHITE). ADDITIONAL COLORS ARE AVIALABLE AND CAN BE SELECTED BY ARCHITECT/CUSTOMER FROM STANDARD COLOR CHART SUPPLIED BY NOISE BARRIERS, LLC.

COLOR TO BE: \_\_\_\_\_

**PROPRIETARY**  
THIS DESIGN AND DRAWING IS THE EXCLUSIVE PROPERTY OF NOISE BARRIERS, LLC. AND IS SUBMITTED AS CONFIDENTIAL INFORMATION IN CONNECTION WITH YOUR INQUIRY. IT MUST NOT BE USED FOR ANY OTHER PURPOSES, NOR CAN IT BE COPIED OR LOANED WITHOUT WRITTEN PERMISSION. UPON REQUEST IT MUST BE RETURNED IMMEDIATELY.

REVISIONS	DESCRIPTION	DATE	BY

DESCRIPTION		DATE	BY	DESCRIPTION
QUIETPERF NB-IV ABSORPTION PANELS				
CUSTOMER				
NOISE BARRIERS				
DRAWN BY		PROJ. MGR.		PROJECT NO.
DATE		SHEET	1 OF X	QUIETPERF

**NOISE BARRIERS**  
401 AIRPORT DRIVE  
NORTH AURORA, IL 60532  
Phone: (847) 843-0500  
Fax: (847) 843-0501  
www.noisebarriers.com