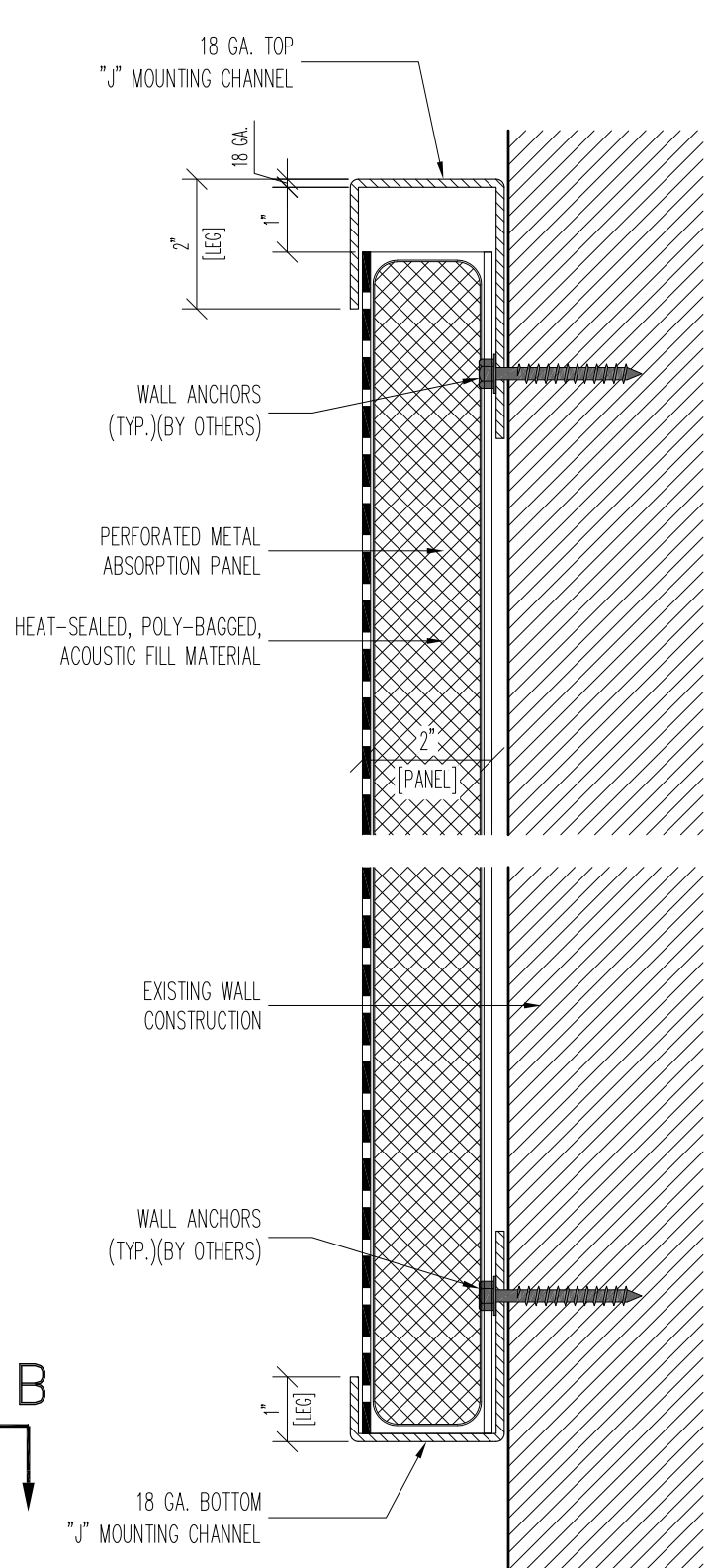
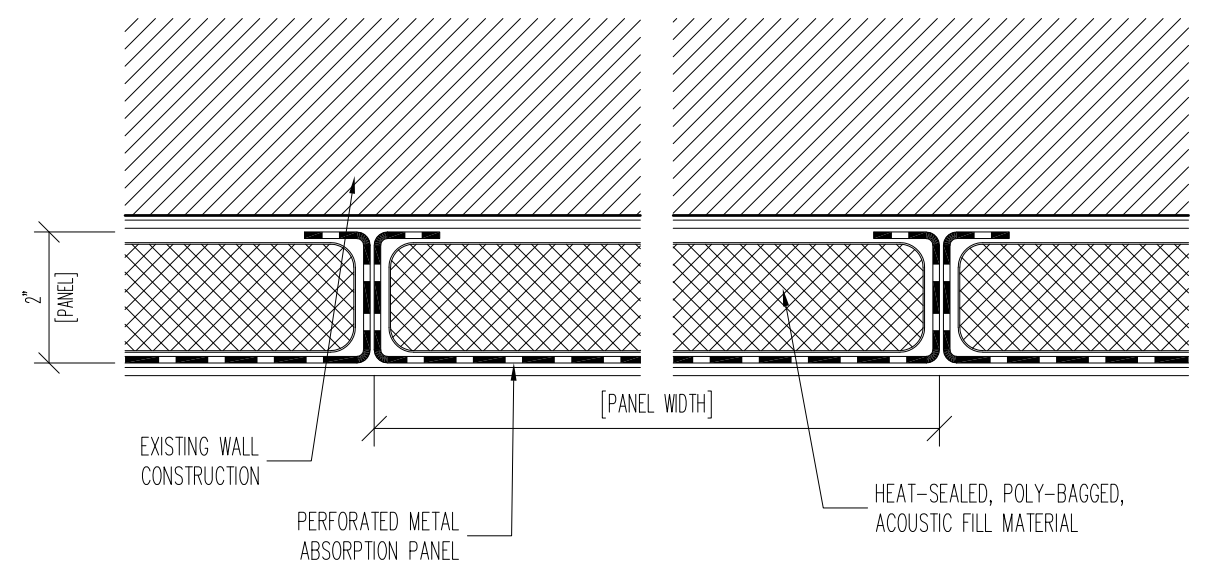


PARTIAL ENLARGED ELEVATION VIEW



SECTION A-A



SECTION B-B

GENERAL NOTES:

1. ABSORPTION PANELS ARE FORMED FROM 22 GA. PERFORATED STEEL WITH $\frac{3}{32}$ " HOLES ON $\frac{3}{16}$ " STAGGERED CENTERS.
2. PANEL FILL: IS NON-COMBUSTIBLE, SOUND ABSORBING FIBERGLASS. ACOUSTIC FILL IS PROTECTED WITH A HEAT-SEALED 2 MIL POLY BAG AND PLASTIC MESH SPACER.
3. PANELS ARE SUPPLIED WITH CONTINUOUS 18 GA. TOP 'AND BOTTOM 'J'-CHANNEL FOR MOUNTING PANELS TO EXISTING WALL/CEILING. ANCHORING HARDWARE VARIES BASED ON EXISTING WALL CONSTRUCTION.
4. FINISH: PANELS ARE AVAILABLE WITH A TGIC POLYESTER POWDER COATING OR UNFINISHED G-90 SPANGLED GALVANIZED COATING. STD. PAINT COLOR IS RAL-9003 (STD. WHITE). ADDITIONAL COLORS ARE AVIALABLE AND CAN BE SELECTED BY ARCHITECT/CUSTOMER FROM STANDARD COLOR CHART SUPPLIED BY NOISE BARRIERS, LLC.

COLOR TO BE: _____

PROPRIETARY
THIS DESIGN AND DRAWING IS THE EXCLUSIVE PROPERTY OF NOISE BARRIERS, LLC. AND IS SUBMITTED AS CONFIDENTIAL INFORMATION IN CONNECTION WITH YOUR INQUIRY. IT MUST NOT BE USED FOR ANY OTHER PURPOSES, NOR CAN IT BE COPIED OR LOANED WITHOUT WRITTEN PERMISSION. UPON REQUEST IT MUST BE RETURNED IMMEDIATELY.

REVISIONS	DESCRIPTION	DATE	BY

DESCRIPTION		QUIETPERF NB-II-B ABSORPTION PANELS	
CUSTOMER		NOISE BARRIERS	
DRAWN BY	PROJ. MGR.	PROJECT NO.	
DATE	SHEET		
	1 OF X		

NOISE BARRIERS
401 AIRPORT DRIVE
NORTH AURORA, IL 60532
Phone: (847) 843-0500
Fax: (847) 843-0501
www.noisebarriers.com