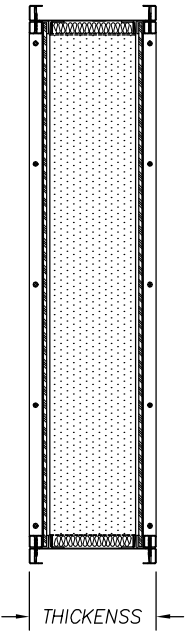


## SECTION B-B



## SECTION A-A

APPROXIMATE WEIGHT: 14 LBS./SQ. FT. WE RECOMMEND EXTRA STUDS/BRACING UNDER OPENING FOR SUPPORT.

WINDOW #	VIEWING SIZE		FRAME SIZE			ROUGH OPENING			INTERIOR GLASS DESCRIPTION			EXTERIOR GLASS DESCRIPTION					
	WIDTH	HEIGHT	WIDTH	HEIGHT	THK.	WIDTH	HEIGHT	THK.	WIDTH	HEIGHT	THICKNESS	TYPE	WIDTH	HEIGHT	THICKNESS	TYPE	

- GENERAL NOTES:
- 1.) R.O. SIZE = (FRAME SIZE + 1/2")
  - 2.) VIEWING SIZE = (FRAME SIZE - 4 1/2")
  - 3.) FRAME THICKNESS IS TYPICALLY EQUAL TO WALL THICKNESS
  - 4.) STANDARD GLASS IS 1/2" THICK LAMINATED SAFETY GLASS

REVISIONS				DESCRIPTION			
No.	DATE	BY					

CUSTOMER	STC 53 - ACOUSTIC WINDOW
DRAWN BY	MAH
DATE	
SCALE	NONE

TYPE:	
SHEET	1 of 3

DRAWING NO.	HM-53-1
-------------	---------

**Noise Barriers, LLC**  
 2001 Kelley Court, Libertyville, IL 60048  
 Phone: 847-843-0500 Fax: 847-843-0501  
 www.noisebarriers.com